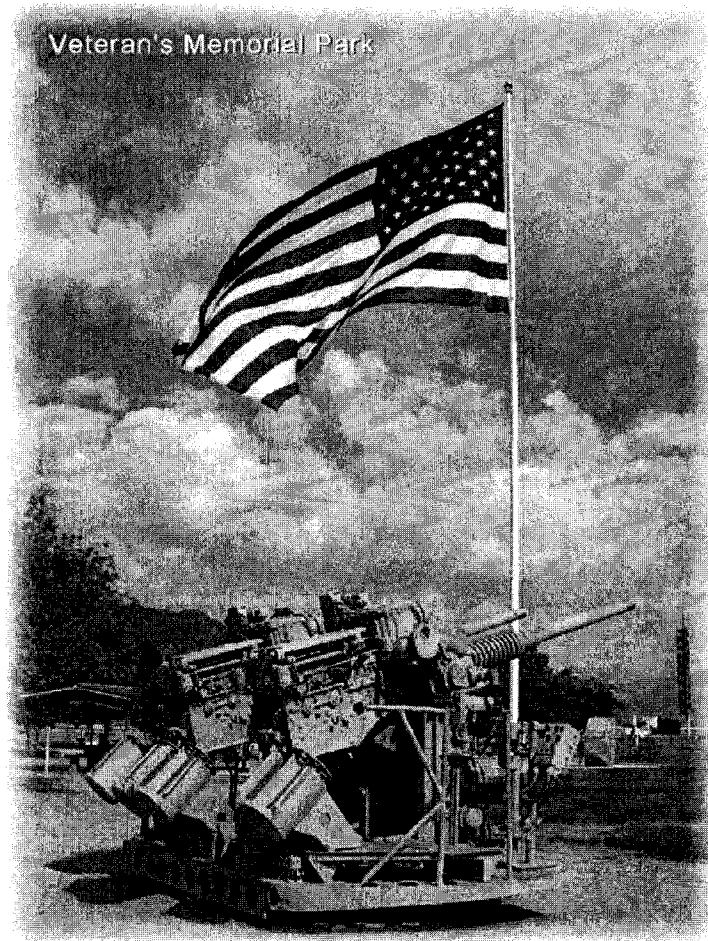


# Mineral County 2010 Master Plan



*America's Patriotic Home*

Prepared by:

## **MINERAL COUNTY REGIONAL PLANNING COMMISSION**

Commission members:

Mark Nixon, Chairman

James Pruss, Vice-Chairman

Wilfred Buffington

Glenn Bunch

Harold Dimmick

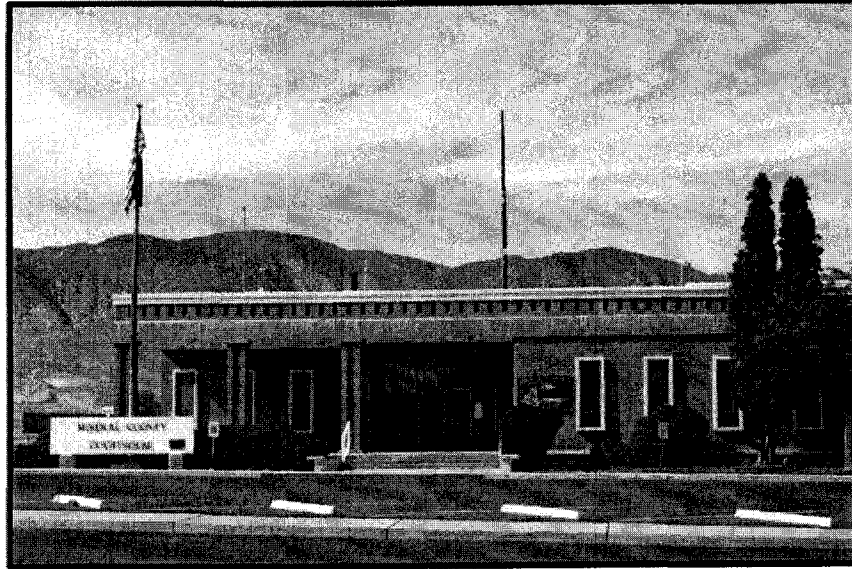
Betty Easley

Shelley Hartmann

Roland L. Adams, Planning Consultant

Debbie Jordan, Planning Secretary

**The preparation of this Plan was financed by Mineral County  
through the FY 2009-2010 and 2010-2011 Budgets**



Approved by:

## **MINERAL COUNTY BOARD OF COMMISSIONERS**

Commissioners:

Jerrie Tipton, Chairman

Jim Essenpreis

Nancy Black

Cherrie A. George, County Clerk

**Printed and CD copies of this document are available in the  
Mineral County Clerk Treasurer's Office, the Mineral County Library and  
the Mineral County Economic Development Authority**

## Table of Contents

Master Plan 2010, Mineral County, Nevada Title Page .....	1
Mineral County Regional Planning Commission.....	2
Mineral County Board of Commissioners.....	3
Table of Contents.....	4-5
SECTION I: Introduction .....	6-7
SECTION II: Historical Background and Features.....	8-10
SECTION III: Physical Characteristics .....	11
A. Topography.....	11
B. Soils and Geology .....	11
C. Climate .....	11
SECTION IV: Master Plan Elements.....	12-14
A. Compliance .....	12
B. Land Capability Analysis.....	13
C. Plan Development Process .....	13
D. Land Use and Zoning.....	13-14
SECTION V: Conservation and Natural Resources .....	15-20
A. Water Quality.....	15-16
B. Water Quantity .....	16-17
C. Walker Lake Issues .....	17-18
D. Wildlife.....	19
E. Vegetation Types.....	19-20

SECTION VI: Economic Development ..... 21-26

- A. Mineral County Development Assets .....22
- B. Current Economic Activities at Hawthorne Weapon and Ammunition Depot (HWAD) . 22-23
- C. Proposed Development County Wide .....23
- D. Target Markets.....23
- E. New Initiatives.....23
- F. Mineral County Economic Development Authority (MCEDA) .....24
- G. Competitive Advantages..... 24-25
- H. Mineral County Government Land for Sale and Development.....25
- I. Private Property for Development.....25
- J. Hawthorne Weapon and Ammunition Depot (HWAD) Arms Program ..... 25-26
- K. Proximity to Other Western U.S. Cities.....26

SECTION VII: Population Characteristics..... 27-28

SECTION VIII: Public Services ..... 29-34

- A. General.....29
- B. Parks and Recreation ..... 29-32
- C. Airport .....32
- D. Schools ..... 33-34

SECTION IX: Federally Managed Lands..... 35-38

SECTION X: Goals and Recommendations ..... 39-40

SECTION XI: Master Plan Organization and Administration ..... 41-42

- A. Financial Programming ..... 41-42
- B. Master Plan Implementation .....42

SECTION XII: Exhibits and Maps.....43

SECTION XIII: Master Plan Map .....44